



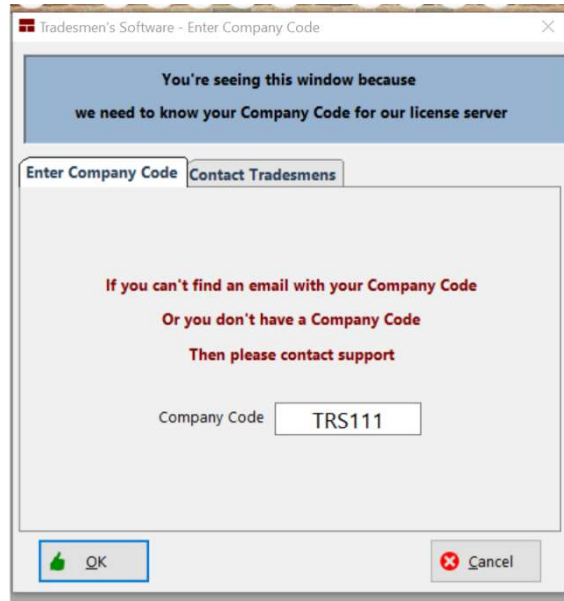
## V5 FULL SETUP INSTRUCTIONS

To install the new estimating program from our website, close all open programs and proceed with the following steps:

1. Click on **"Download V5 Setup"** found on <http://tradesmens.com/updates/downloads/> . Select to Save/Download file to your computer.
2. Double Click on the **"Setup\_OS3DE.exe"** file and follow the instructions on your screen. We recommend you use the following settings and commands.
  - a. Welcome Screen. Click on "Next".
  - b. License Screen. Read the license agreement and accept the terms. Click on "Next".
  - c. Setup Type. Select "Full Install" and then click on "Next". ***If this is a network install, make sure your Network Administrator has provided you a Shared, Drive Mapped Location. Your Network Administrator can find more Network Setup information at [www.tradesmens.com/support/support-documents](http://www.tradesmens.com/support/support-documents) and click on Print Network Setup Guide***
  - d. Destination Folder will default to "C:\TSI\OS3DE". We recommend that you do not change this. Click on "Next".
  - e. Ready to Install Screen will verify your settings. Click on "Next".
  - f. Installation of Related Programs. Check the box for "Install PDF to TIFF" and click on "Next".
3. Follow the next installation wizard for PDF to TIFF Installer.  
**NOTE:** The PDF to Tiff converter is a free basic tool that we have purchased for distribution. Any paid viewing software such as BlueBeam or Adobe would contain tools for viewing and converting PDF floor plan files to TIFF.
4. You will need to open the **PDF toTIFF** program by clicking on the new icon on the desktop. Change settings:
  - a. Options – Compression = PACKBITS
  - b. Options - Resolution = 300
  - c. Export to = C:\TSI\OS3DE\2D Plans(or equal equivalent on network install)
  - d. Click on **X** in top right corner to close.
5. After Installing Version 5.0j (or newer), you will need to open the software by double clicking on the Tradesmen's OS3DE icon on your desktop. The following is the procedure to enter your specific Company Code and selecting your user license. The Company Code was provided to you at the time of purchase or e-mailed to your company contact.

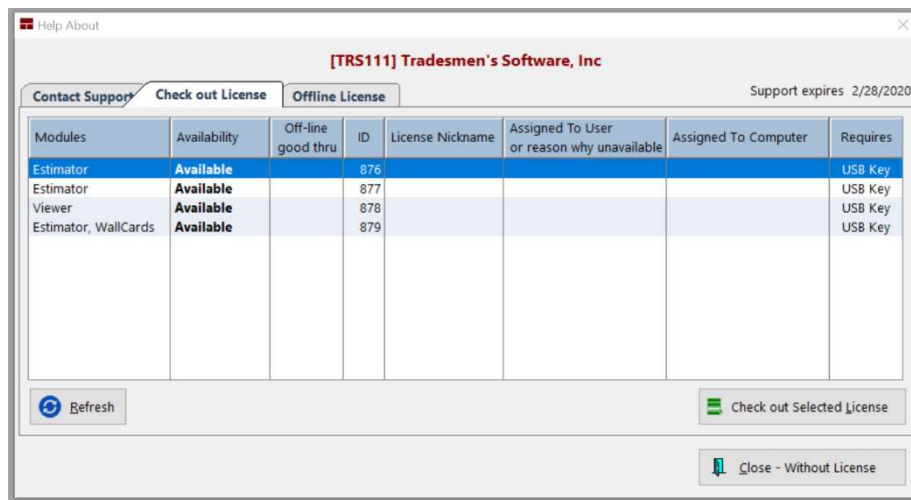
You will need to be connected to the internet to activate. This will need to happen once with each workstation. After the Company Code is entered, click [OK].

**Note: TRS111 is an example for this documentation. Make sure to use the Company Code that was provided to you. Please E-mail [support@tradesmens.com](mailto:support@tradesmens.com) if you do not know your company code.**



You will then see a window with your available licenses. If you have purchased additional modules (Exa...Wall Card, IFC Converter), you will see them listed in the Modules column.

Select/Highlight the desired Available license and then click on [Check out Selected License].

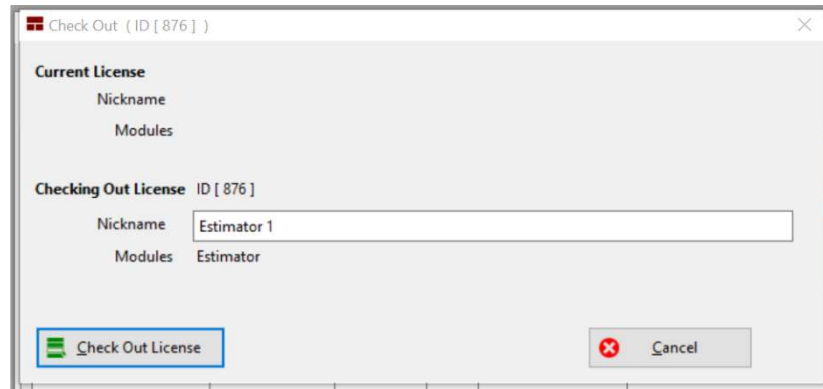


The next screen will give you the option to "Nickname" the license, but it is not required. The "Nickname" option is available if you would like to assign a specific license to a specific user or just want to make it more easily identifiable.

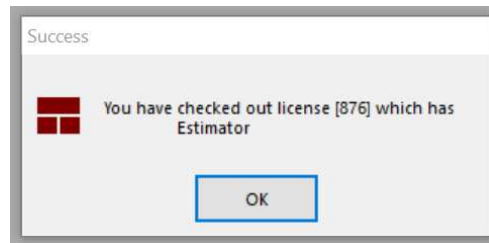
You can put anything you'd like for a nickname. The following are some examples.:

- Estimator 1
- Project Manager
- TSI Viewer
- Bob, Jeff, Steve's

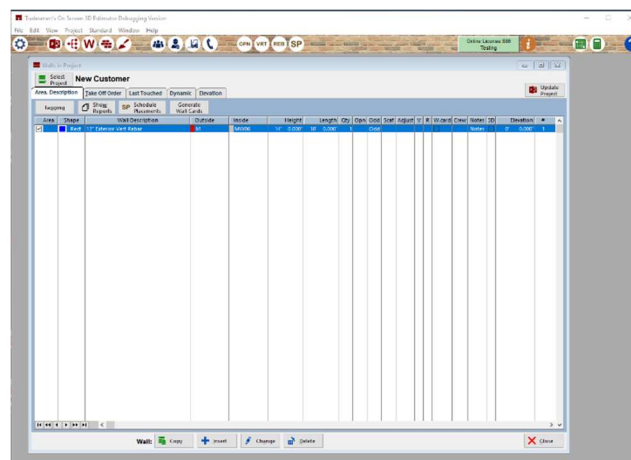
Click on [Check Out License] once you have entered a "Nickname" or have decided to leave it blank.



You will then get a confirmation of "Success". Click on [OK].

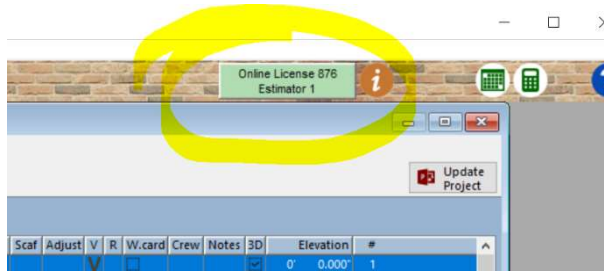


The program will open to the demo project "New Customer"



Closing the program will return the license. Launching the program from the same machine will automatically check out the last successfully checked out license.

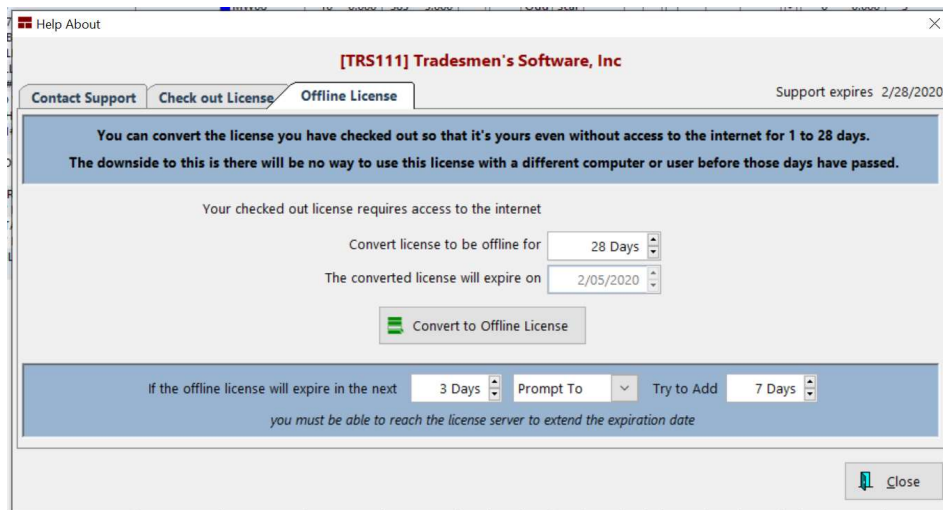
You can check out a different license if/when the need arises. Click on the green license button located in the upper right corner of the screen. This will bring you to the screen with the available licenses.



There is an option to Configure Offline for times when you will not be able to stay connected to the internet (Exa...Field work, Vacation). The software has the option to run offline for up to 28 days. Click the green license button and then the [Offline License] tab.

Note: You will need to connect to the internet at least once a month to renew the Offline License.

Enter the number of days that you wish to have the license offline and then click on [Convert to Offline License].



Please do not hesitate to call us with any problems, questions or complications.



support@tradesmens.com

1-800-429-9002